



Log Analyzer 5.0 Plug-in Installation

Version: 1.5

Last Updated: 01-09-2021

Copyright

Copyright © 2021 [Tecknodreams Software Consulting Pvt. Ltd.](#) All Rights Reserved.

Restricted Rights Legend

This documentation is subject to and made available only pursuant to the terms of the Tecknodreams License Agreement and may be used or copied only in accordance with the terms of that agreement. It is against the law to copy the documentation except as specifically allowed in the agreement. This document may not, in whole or in part, be copied photocopied, reproduced, translated, or reduced to any electronic medium or machine readable form without prior consent, in writing, from Tecknodreams.

Information in this document is subject to change without notice and does not represent a commitment on the part of Tecknodreams.

This document explains how to install the Log Analyzer Plug-in. The Plug-in should be installed after SapphireIMS is installed and running. After installing the Plug-in proceed with the rest of the configuration as given in the user manual.

Plug-in Location

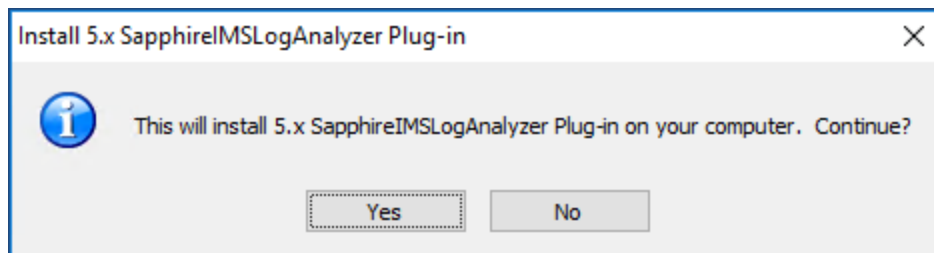
- To download the latest Log Analyzer plug-in version 1.5, go to the URL <http://www.sapphireims.com/patches/>. Download the file 'SapphireIMS_LogAnalyzer-5.0-v1.5-Setup.exe'.

Pre-requisite for Log Analyzer Plug-in

- Log Analyzer Plug-in 5.0 Ver 1.5, requires SapphireIMS patch SAPP-5005 or higher.

Log Analyzer Plug-in Installation

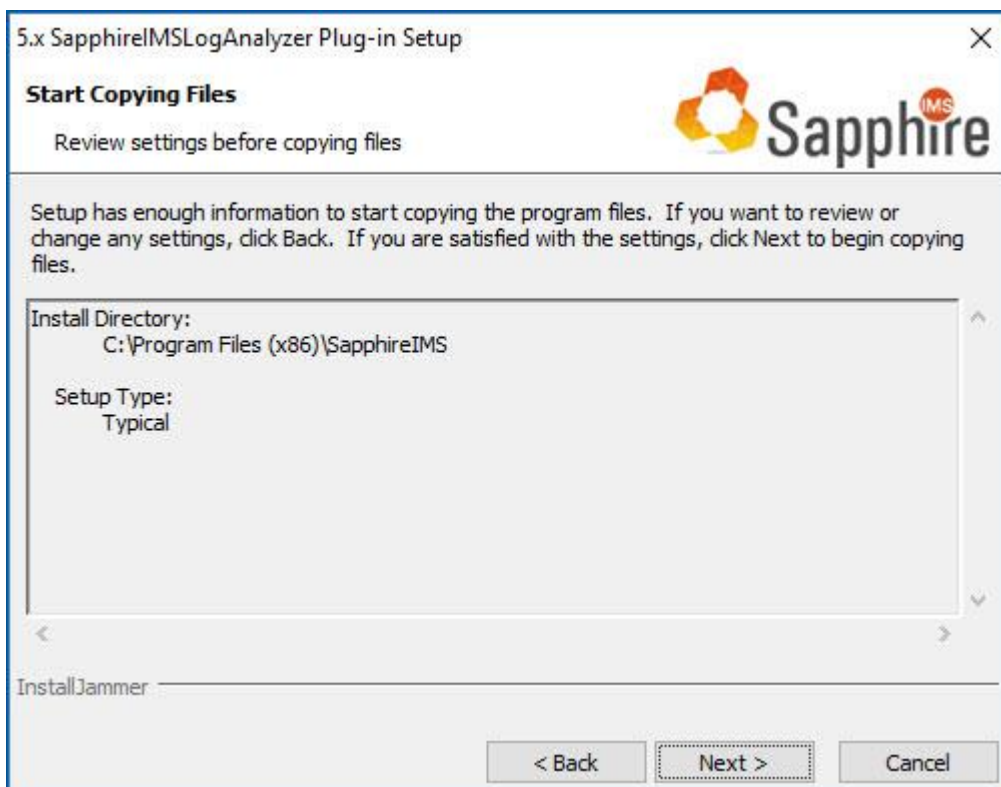
- Run 'SapphireIMS_LogAnalyzer-5.0-v1.5-Setup.exe' with administrator privilege and click on the "Yes" button to proceed with Installation.



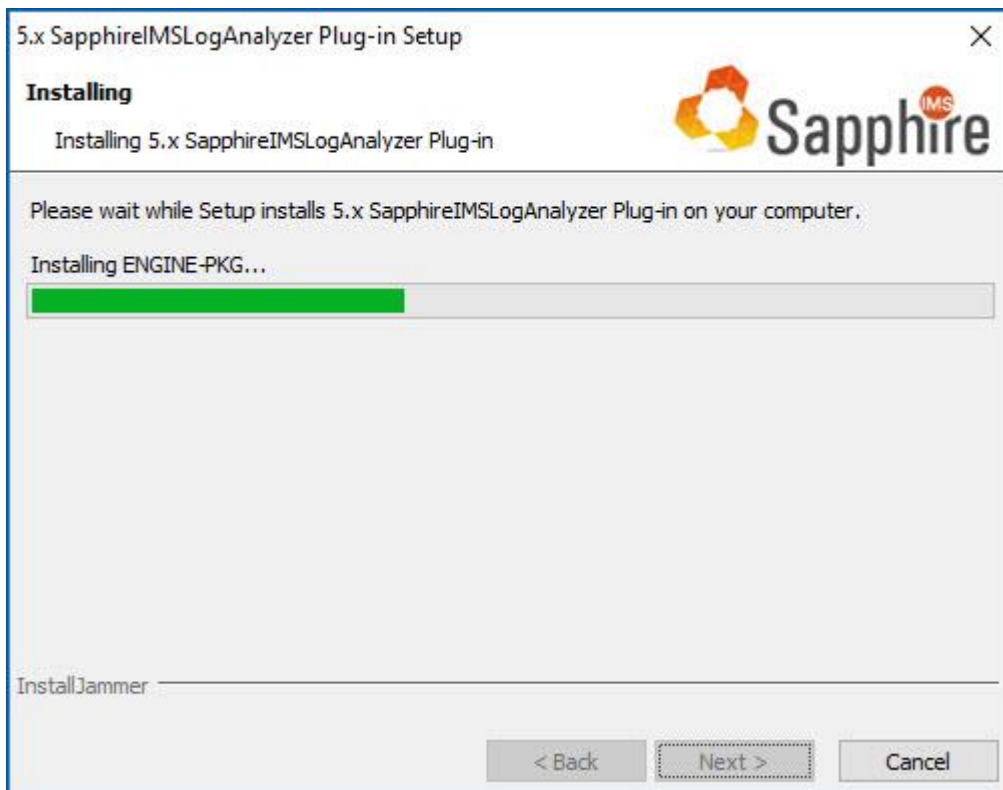
- Click on “Next”, to install the log analyzer plugin in
 ‘<Installation folder> /SapphireIMS/Plugins/LogAnalyzer’



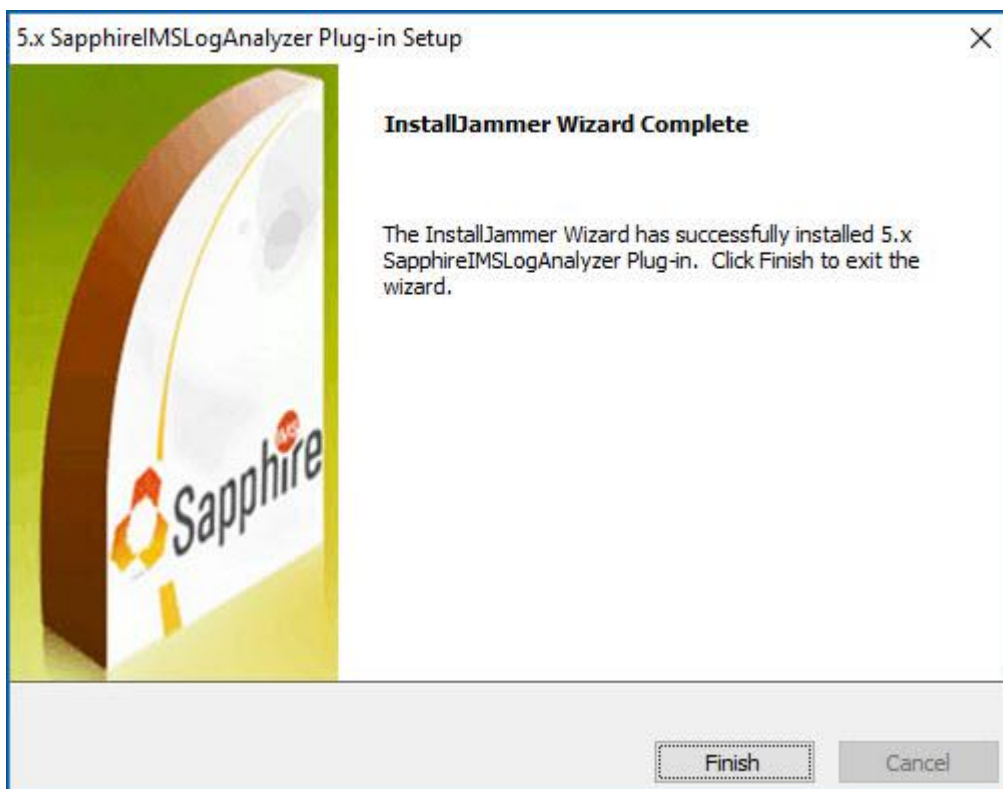
- The following screen is displayed



- Click on “Next”.



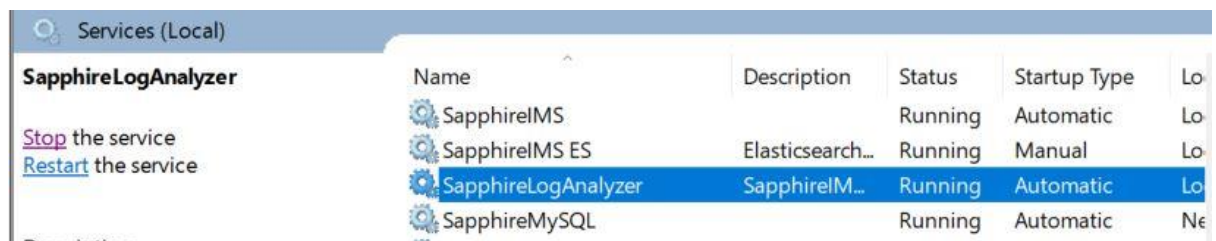
- Click on the “Finish” button. The Log Analyzer installation is complete.



Log Analyzer Services

On successful installation of Log Analyzer, it creates the following services. Verify that the services are up and running.

- Sapphire Log Analyzer service which collects the Event Log, Sys Log, SNMP Traps, Application Log, NetFlow and sFlow data.
- SapphireES service which stores the data. Sapphire ES service is dependent on Sapphire Log Analyzer service. Once the Sapphire Log Analyzer service is started, it also starts the Sapphire ES service.



- Sapphire Log Analyzer service is dependent on the SapphireIMS service. Sapphire Log Analyzer service can start only if SapphireIMS service is running.
- After verifying the services are started, proceed with the rest of the configuration as specified in the user help document.