



SapphireIMS Message Queue Plugin

Version: v1.0, compatible with patch SAPP_4099 and onwards

Last Modified: 25-Oct-2017

Copyright

Copyright © 2017 [Tecknodreams Software Consulting Pvt. Ltd.](#) All Rights Reserved.

Restricted Rights Legend

This documentation is subject to and made available only pursuant to the terms of the Tecknodreams License Agreement and may be used or copied only in accordance with the terms of that agreement. It is against the law to copy the documentation except as specifically allowed in the agreement. This document may not, in whole or in part, be copied photocopied, reproduced, translated, or reduced to any electronic medium or machine readable form without prior consent, in writing, from Tecknodreams.

Information in this document is subject to change without notice and does not represent a commitment on the part of Tecknodreams.

Introduction

Moving forward with SapphireIMS, post patch number SAPP_4099, it is mandatory to install SapphireIMS Message Queue Plugin as a pre-requisite component to manage your assets using agent based approach.

Pre-requisites

1. To install SapphireIMS Message Queue Plugin it requires
 - a. SapphireIMSMessageQueuePlugin-4.0-v1.0-Setup.exe downloadable from <http://www.sapphireims.com/patches/>
 - b. Pre-requisites folder containing Erlang 20.0 and RabbitMQ 3.6.12

Note:

Erlang 20.0 shall be downloadable from
http://erlang.org/download/otp_win64_20.0.exe

(Downloadable file name: otp_win64_20.0.exe)

RabbitMQ 3.6.12 shall be downloadable from

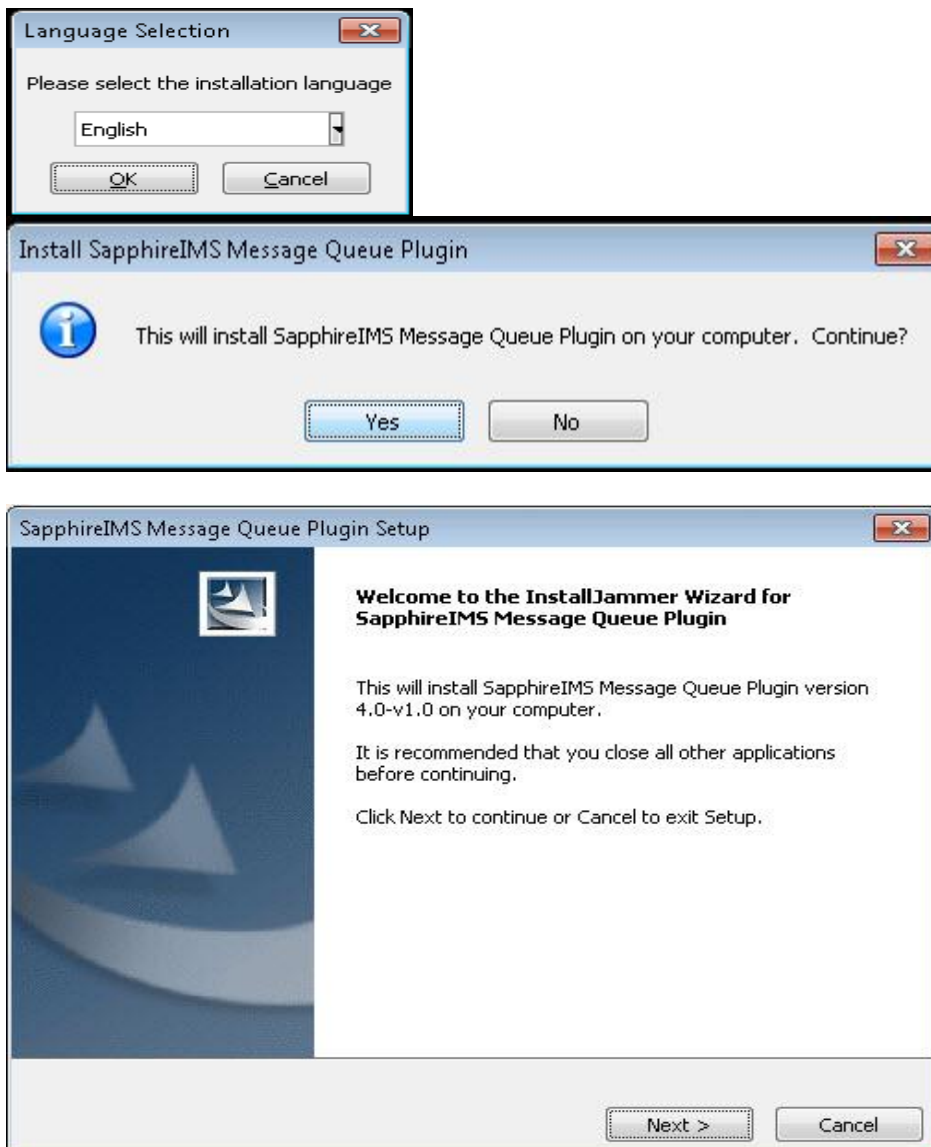
<https://www.rabbitmq.com/releases/rabbitmq-server/v3.6.12/rabbitmq-server-windows-3.6.12.zip>

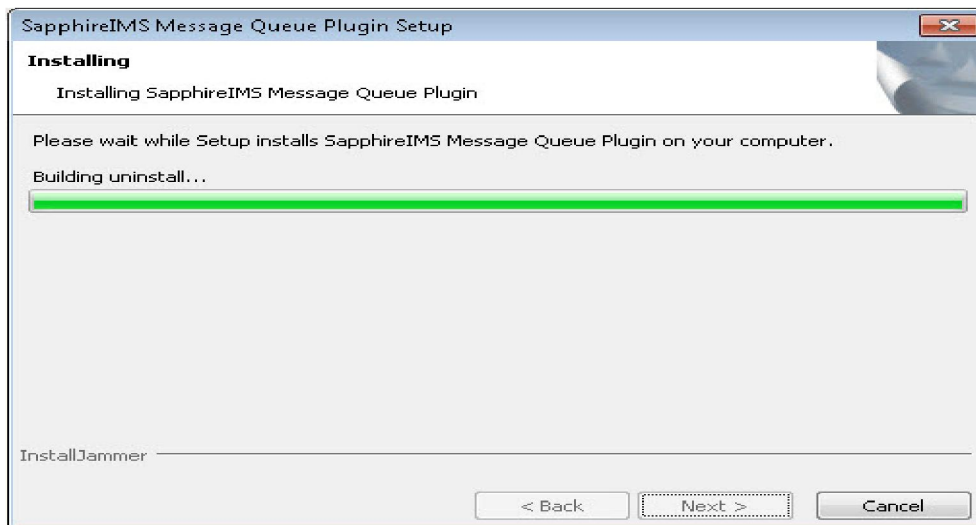
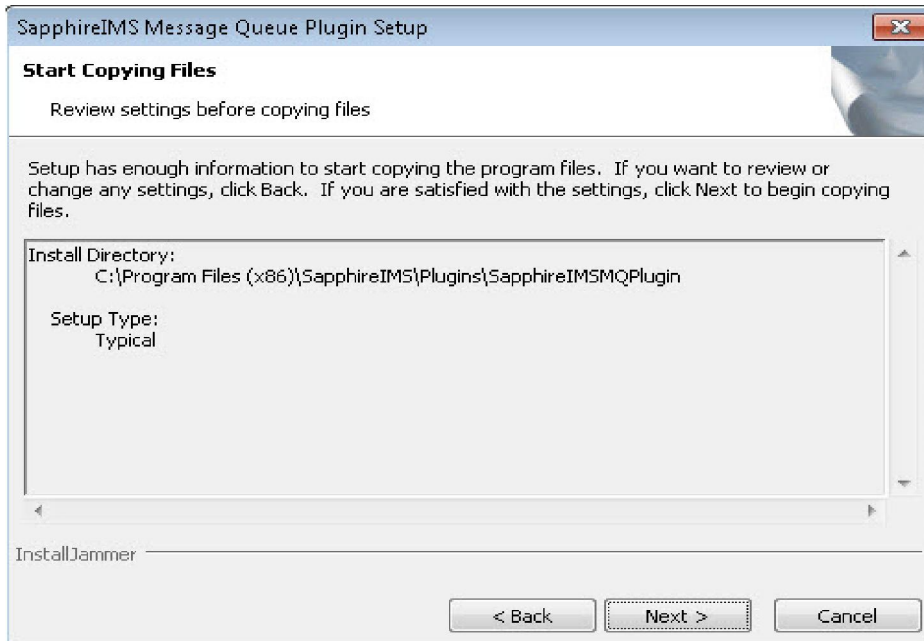
(Downloadable file name: rabbitmq-server-windows-3.6.12.zip)

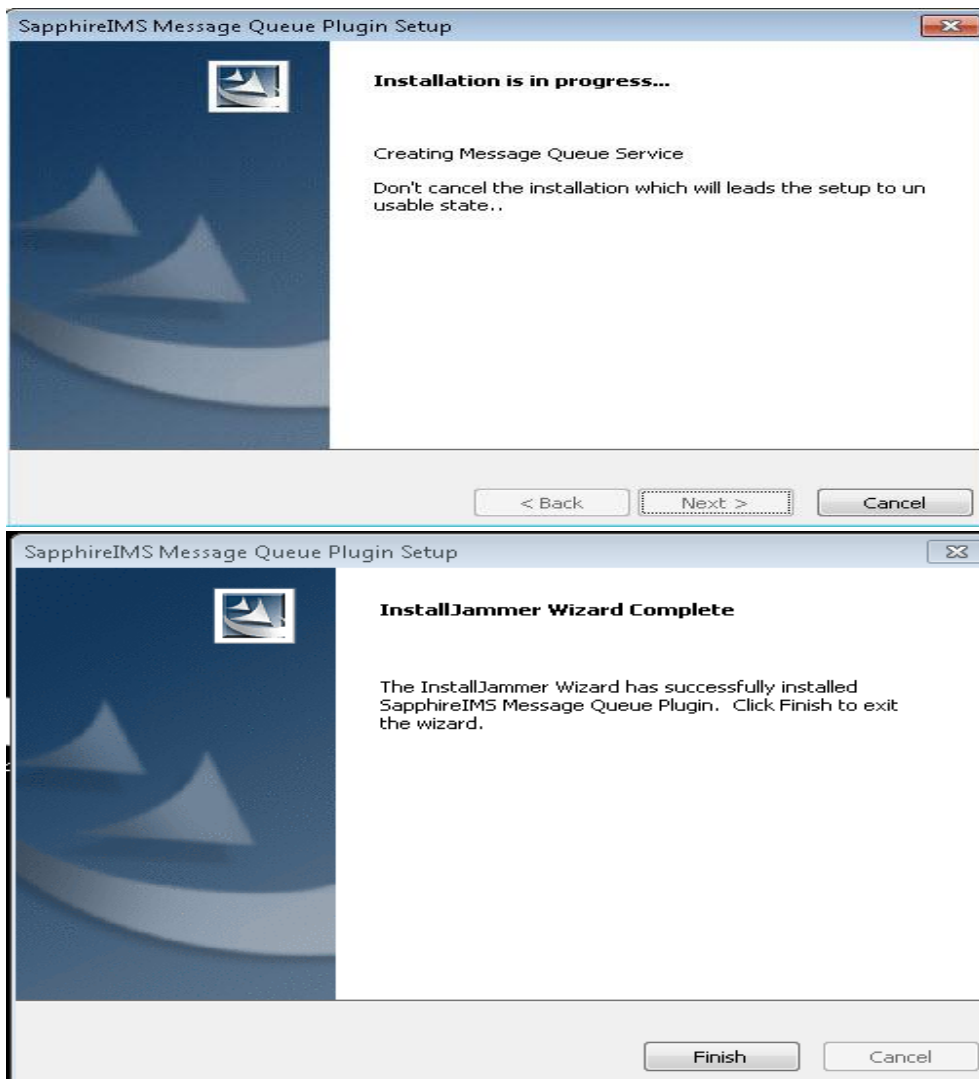
2. Port 5672 to be made available in SapphireIMS installed machine
3. The plugin is mandatory installation for
 - a. SapphireIMS professional edition server
 - b. SapphireIMS enterprise edition servers (Cluster server and Cluster member/Data collector)
 - c. SapphireIMS enterprise plus edition probes and probes add-on. The installation is not needed for SapphireIMS MSP server
4. Plugin is compatible with only 64-bit version of SapphireIMS

Installation Steps

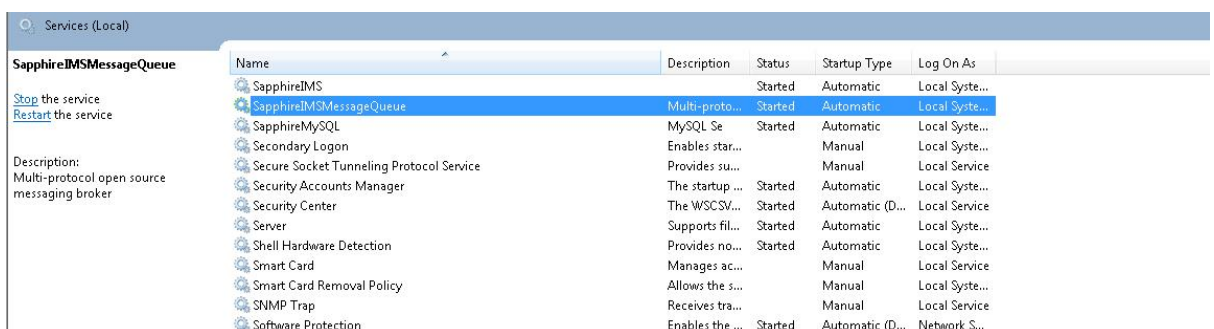
1. Please create a folder with the name "Pre-requisites" and copy the files otp_win64_20.0.exe and rabbitmq-server-windows-3.6.12.zip.
NOTE: Please ensure SapphireIMSMessageQueuePlugin-4.0-v1.0-Setup.exe is not under the pre-requisites folder
2. Double click on 'SapphireIMSMessageQueuePlugin-4.0-v1.0-Setup.exe' and follow the installation steps from the wizard



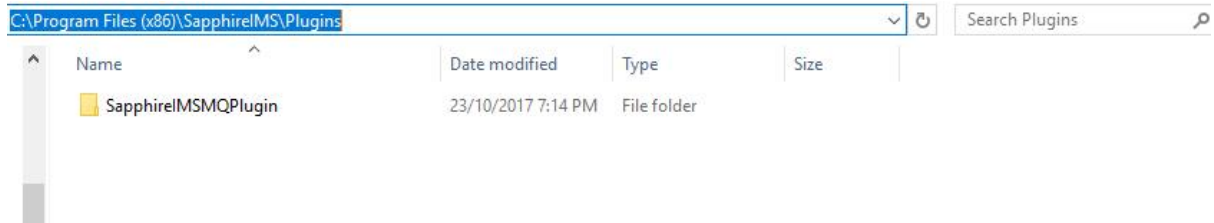




- On successful installation of plugin, a service name 'SapphireIMSMessagesQueue' shall get created. Open services.msc to view and start it if it is not already started.



Also, a directory call SapphireIMSMQPlugin shall get created at the SapphireIMS installation path.



Note: Post plugin installation, 'SapphireIMS' service is made dependent on 'SapphireIMSMessageQueue' service.